

## Violoncello

## Trio

for Bb Clarinet, Cello and Piano

Beethoven, Op. 38

Andante con moto. Alla marzia.

Violoncello part of Beethoven's Trio, Op. 38, measures 1-52. The score is written in bass clef with a key signature of two flats (Bb and Eb) and a 2/4 time signature. The tempo is marked "Andante con moto. Alla marzia." The dynamics range from *f* (forte) to *pp* (pianissimo). The piece includes a section marked "Presto" starting at measure 16, which features a 6-measure rest and a 2-measure rest. The score concludes at measure 52.

Measures 1-8: *f*, *p*, *fp*, *pp*

Measures 9-15: *cresc.*, *p*, *cresc.*, *sf*, *sf*, *f*

Measures 16-26: *Presto*, *sf*, *p*, *sf*, *sf*

Measures 27-31: *cresc.*, *f*

Measures 32-38: *f*, *sf*, *sf*, *f*, *sf*, *sf*

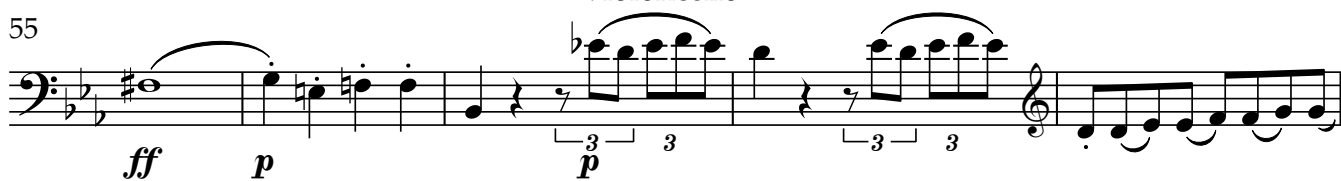
Measures 39-47: *p*, *cresc.*, *f*, *sf*

Measures 48-51: *p*, *cresc.*, *sf*

Measure 52: *f*

## Violoncello

55



60



66



71



77



83



90



96



103



110



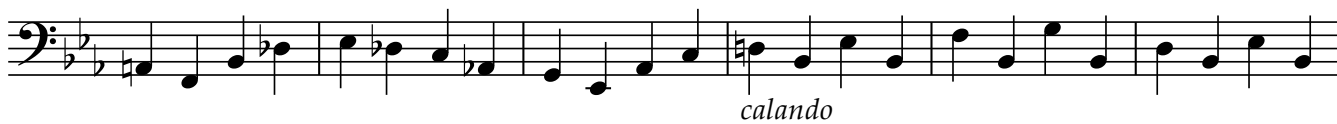
118



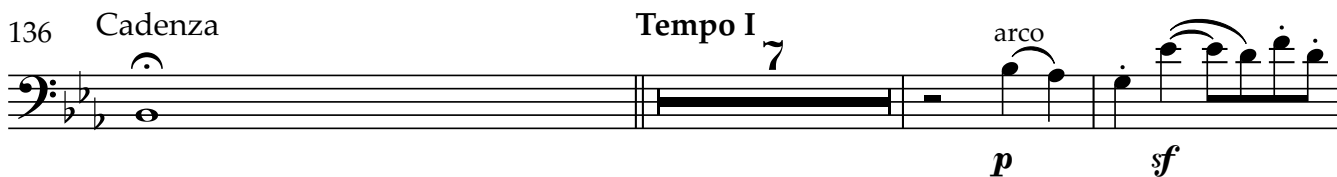
124



130



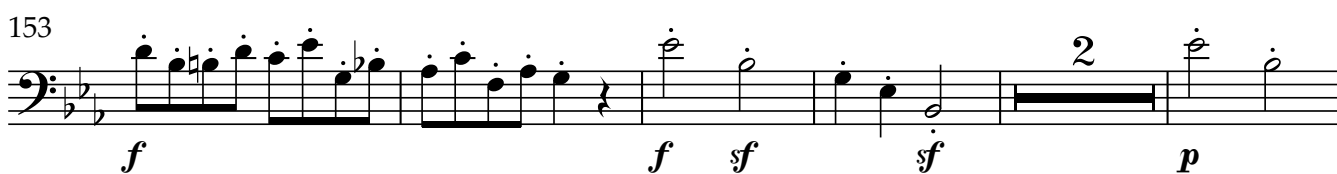
136 Cadenza



148



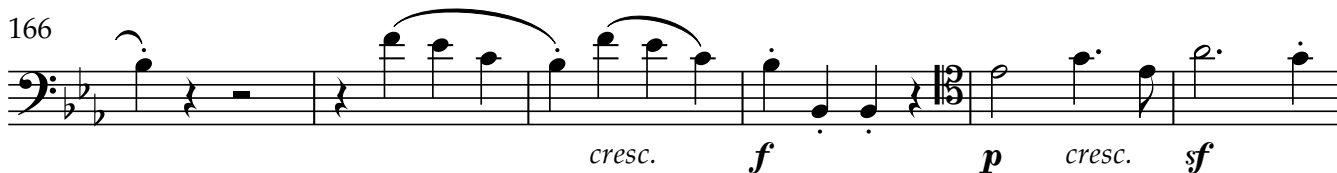
153



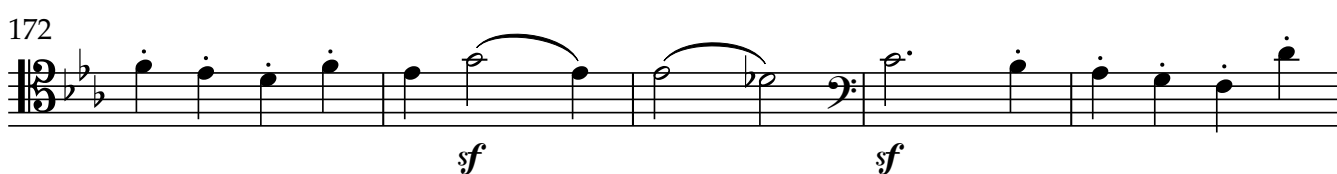
160



166



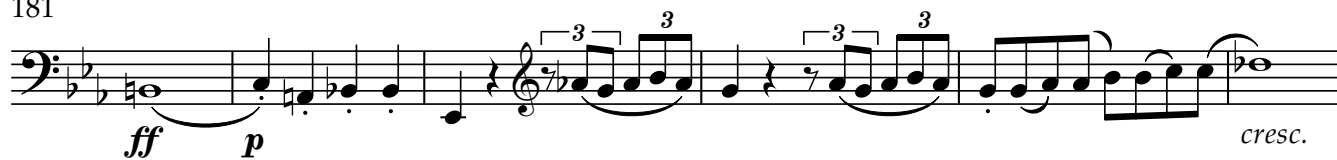
172



177



181



187



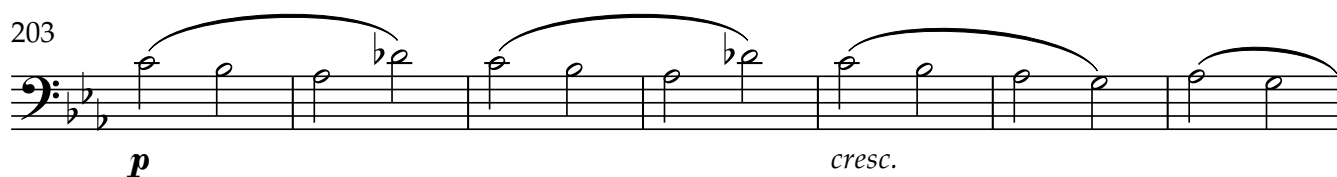
192



197



203



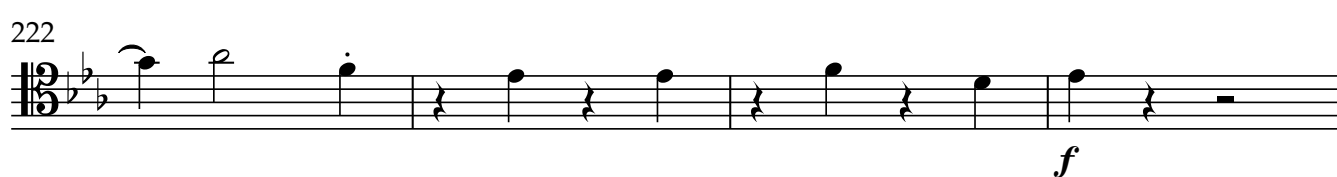
210



216



222



226

